



# TOKISTAR LIGHTING INSTRUCTION MANUAL

## Micro Spotlight Series

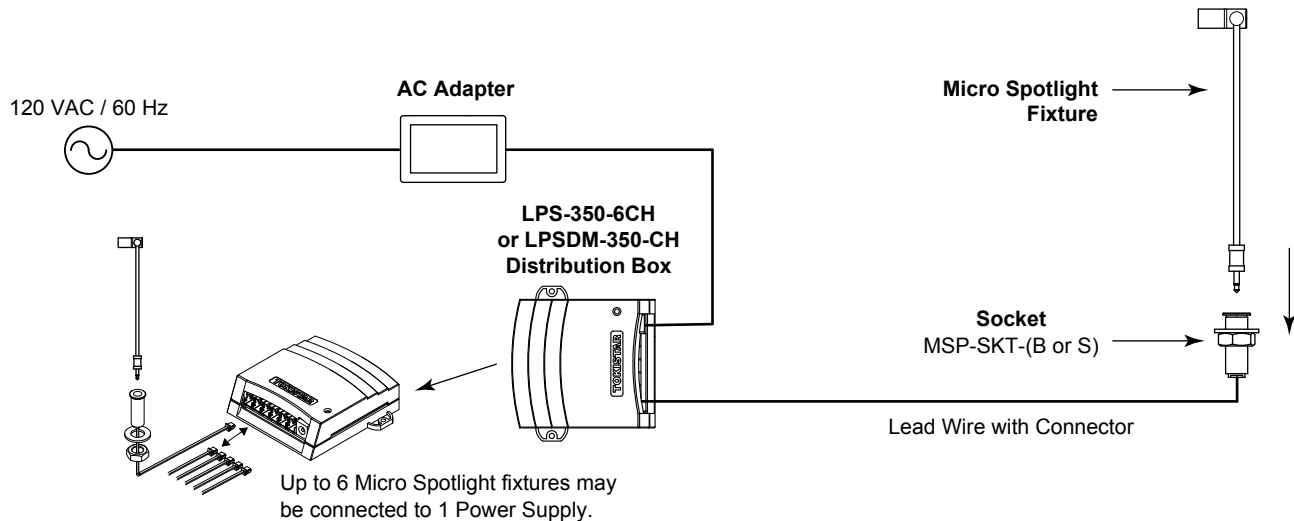
Fixture Type: MSP- \_\_\_ - \_\_\_ - \_\_\_ - \_\_\_

### General Description

Tokistar's Micro Spotlight Series is a low-voltage lighting system. The system operates at 5 VDC from Class II Listed Power Supplies. Fixtures are labeled with wattage and operating voltage.

### MSP - 3000K - 30D - S - 150

LED Color		Lens Style		Fixture Color		Fixture Length	
Color	Code	Code	Style	Code	Color	Code	Length (mm)
2700	2700K	16	16°	S	Silver	30	30 mm
3000	3000K	24	24°	B	Black	150	150 mm
4000	4000K	30	30°			250	250 mm
5000	5000K					350	350 mm



### PRECAUTIONS

1. Read all instructions completely before beginning installation.
2. Turn off electricity before beginning installation.
3. All wiring is to be performed by a qualified electrician.
4. Installation must comply with the National Electrical Code, and all applicable codes.
5. Turn main supply to Power Supply on only after all connections are made and tested.
6. Use only Class II Power Supplies provided by Tokistar with the system.
7. Not for use with phase control dimmers.

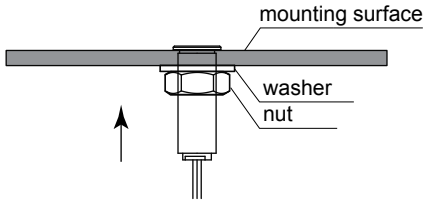
## TOKISTAR LIGHTING

1015 E. Discovery Lane  
 Anaheim, CA 92801  
 TEL: 714 772 7005 FAX: 714 772 7014  
 email: info@tokistar.com Website: tokistar.com

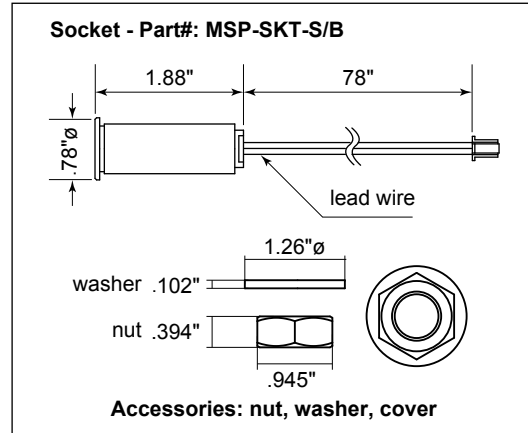
## Micro Spotlight Series includes Fixtures, Socket Assemblies and Power Supplies.

### Mounting Socket Assembly

Provide a 5/8" diameter hole in the mounting surface. Insert the socket assembly through the hole and secure with the nut and washer provided.

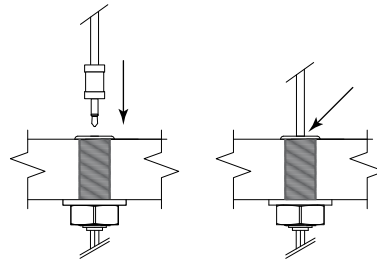


Suggested panel thickness for installation is .078"- 1.22". For use on flat surfaces only.



### Fixture Assembly

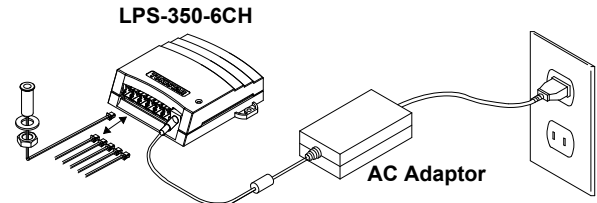
Insert fixture into socket assembly until base of fixture is flush with top of socket assembly.



The base of the fixture must be flush with the top of the socket assembly.

### Power Supply/AC Adaptor

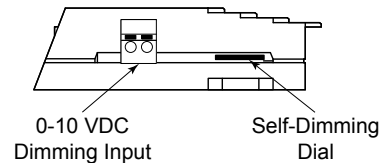
Connect up to 6 fixtures to the LPS-350-6CH Distribution Box. Next plug AC Adaptor into the LPS-350-6CH, and then into wall outlet.



Up to 6 Micro Spot fixtures may be connected to 1 Power Supply.

### Dimming (Optional)

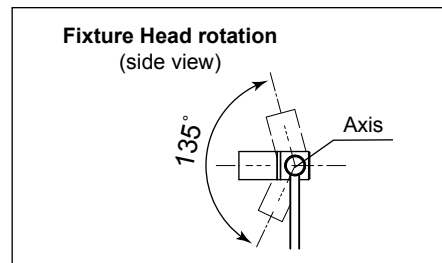
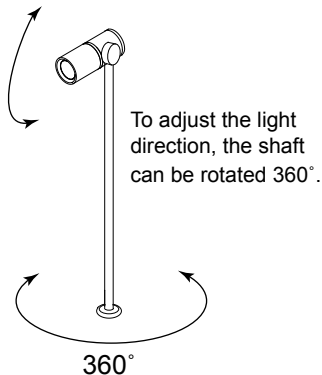
An LPSDM-350-6CH Distribution Box may have been supplied with the Micro Spotlight fixtures. This unit can be used with 0-10 VDC Dimming, or it may be dimmed using the Self-Dimming Dial.



**LPSDM-350-6CH Dimming Distribution**

### Position Fixture

Do not bend the shaft or rotate the fixture head beyond the indicated range.



**Do Not Rotate the Fixture Head Beyond 135°**

## Lens Replacement

**Step 1:** Rotate Fixture Head counterclockwise to remove.

**Step 2:** Using a soft tool, apply pressure to remove lens.

**Step 3:** Insert the new lens using the soft tool.

**Step 4:** Reinsert Fixture Head using a clockwise motion.

