



# TOKISTAR LIGHTING INSTRUCTION MANUAL

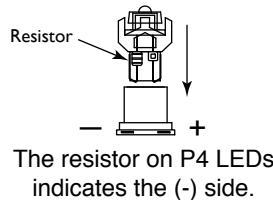
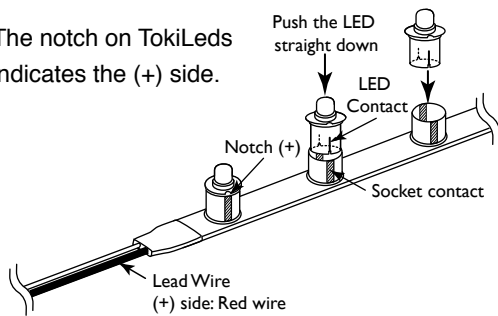
## Tapelight With 8 VDC LEDs

### General Description

Tokistar's Tapelight Series is provided with 8 VDC LEDs. The LEDs are available at 0.1 watt, 0.2 watt, 0.24 watt and 0.4 watt. Each Tapelight fixture is labeled with its appropriate load.

### Tokistar LEDs have polarity

The notch on TokiLeds indicates the (+) side.



### TLP - 50 - WW-UB

Series	Socket Spacing		TokiLeds	
Code	Code	Inches (mm)	Code	Watts/Volts
<b>TLP</b>	<b>15</b>	0.6" (15 mm)	<b>WW</b>	0.1 W / 8VDC
<b>LS</b>	<b>30</b>	1.2" (30 mm)	<b>IW</b>	0.1 W / 8VDC
	<b>50</b>	2.0" (50 mm)	<b>WH</b>	0.1 W / 8VDC
	<b>80</b>	3.0" (80 mm)	<b>WW-HB</b>	0.2 W / 8VDC
	<b>100</b>	4.0" (100 mm)	<b>IW-HB</b>	0.2 W / 8VDC
	<b>150</b>	6.0" (150 mm)	<b>WH-HB</b>	0.2 W / 8VDC
	<b>300</b>	12.0" (300 mm)	<b>WW-UB</b>	0.4 W / 8VDC
			<b>IW-UB</b>	0.4 W / 8VDC
			<b>WH-UB</b>	0.4 W / 8VDC
			<b>AM</b>	0.1 W / 8VDC
			<b>BL</b>	0.1 W / 8VDC
			<b>GR</b>	0.1 W / 8VDC
			<b>MG</b>	0.1 W / 8VDC
			<b>PL</b>	0.1 W / 8VDC
			<b>RD</b>	0.1 W / 8VDC
			<b>KLED-FF</b>	0.2 W / 8VDC
			<b>KLED-SF</b>	0.2 W / 8VDC
			<b>KLED-CF</b>	0.2 W / 8VDC
			<b>P4IW</b>	0.24 W / 8VDC
			<b>P4WH</b>	0.24 W / 8VDC
			<b>P4AM</b>	0.24 W / 8VDC
			<b>P4BL</b>	0.24 W / 8VDC
			<b>P4GR</b>	0.24 W / 8VDC
			<b>P4RD</b>	0.24 W / 8VDC

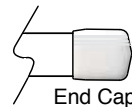
### Power Feeds

Your Tapelight may have been provided in bulk to be cut on site for a precise fit. Wire leads need to be soldered to the cut lengths. Fit Cord protectors over the soldered connections to insulate the conductors.



### End Caps

End Caps insulate the ends of each length of Tapelight. If the fixture is trimmed, an end cap needs to be installed on the cut-end of the fixture.



## ⚠️ PRECAUTIONS

1. Read all instructions completely before beginning installation.
2. Turn off electricity before beginning installation.
3. All wiring is to be performed by a qualified electrician.
4. Installation must comply with the National Electrical Code, and all applicable codes.
5. Turn main supply to the LED Driver on only after all connections have been made and tested.
6. Use only LED Drivers provided by Tokistar with the system.
7. Certain adhesives produce a bi-product of corrosive gas during their curing process, and should not be used in conjunction with our LED Systems where the gas cannot be vented. Consult with the Sealant company for such applications.

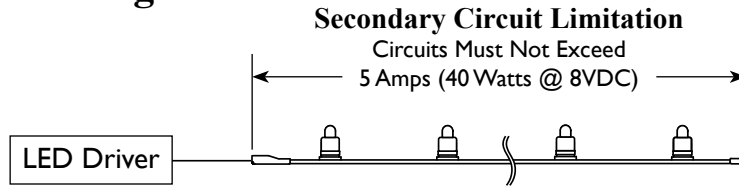
## TOKISTAR® LIGHTING

1015 E. Discovery Lane  
Anaheim, CA 92801

TEL: 714 772 7005 FAX: 714 772 7014

email: info@tokistar.com Website: www.tokistar.com

## Secondary Circuit Wiring



## Maximum Run Lengths

To minimize voltage drop and keep conductors safely within their rating, do not exceed the maximum lengths shown in the charts below for each independent length of Tapelight.

TLP Series

Spacing	0.1 Watt	0.2 Watt	0.24 Watt	0.4 Watt
1.2" (30 mm)	32' (9.8 M)	20' (6.0 M)	16' (5.0 M)	10' (3.0 M)
2.0" (50 mm)	41' (12.5 M)	31' (9.5 M)	27' (8.3 M)	16' (5.0 M)
3.0" (80 mm)	52' (16.0 M)	39' (12.0 M)	35' (10.7 M)	25' (8.0 M)
4.0" (100 mm)	58' (17.8 M)	43' (13.1 M)	39' (11.9 M)	30' (9.0 M)
6.0" (150 mm)	71' (21.6 M)	53' (16.2 M)	48' (14.6 M)	35' (10.7 M)

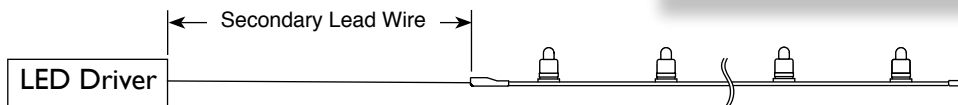
LS Series

Spacing	0.1 Watt	0.2 Watt	0.4 Watt
0.6" (15 mm)	20' (6.0 M)	10' (3.0 M)	5' (1.5 M)
1.2" (30 mm)	40' (12.0 M)	20' (6.0 M)	10' (3.0 M)
2.0" (50 mm)	66' (20.0 M)	33' (10.0 M)	16' (5.0 M)
3.0" (80 mm)	88' (26.8 M)	50' (15.2 M)	25' (8.0 M)
4.0" (100 mm)	98' (30.0 M)	66' (20.0 M)	33' (10.0 M)
6.0" (150 mm)	120' (36.6 M)	90' (27.4 M)	50' (15.0 M)
12.0" (300 mm)	164' (50.0 M)	126' (38.4 M)	82' (25.0 M)

## Recommended Lead Wire Size

The distance from the LED Driver to the fixture, and the load of the fixture, will determine the proper size of secondary wire. The chart on the right indicates recommended wire size based upon the driver being loaded to its full capacity of 5 Amps/40 Watts.

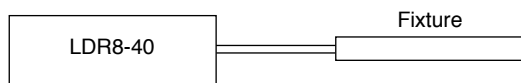
Secondary Lead Wires	
Wire Size	Wire Length
#16 AWG	12' (3.6 M)
#14 AWG	20' (6.1 M)
#12 AWG	30' (9.1 M)
#10 AWG	45' (13.7 M)



## LED Driver Installation

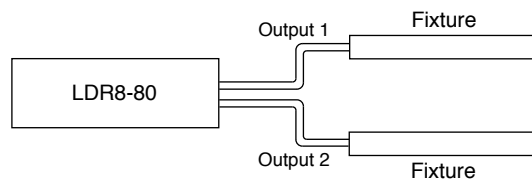
### LDR8-40

This 40 Watt UL Recognized Class 2 LED Driver converts an AC input into an 8 VDC output. Refer to the manual provided with the LED Driver for detailed installation instructions.



### LDR8-80

This dual output Class 2 LED Driver has two independent 40 Watt outputs. Refer to the manual provided with the LED Driver for detailed installation instructions.



Tokistar Tapelight is ETL Listed when operated from our LED Drivers.



Part#	Input Volts	Output Volts	Output Ratings
LDR8-40	100~240	8 VDC	1 @ 5 Amps
LDR8-80	100~240	8 VDC	2 @ 5 Amps

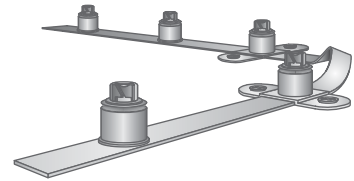
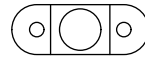
## Mounting Fixtures

The proper mounting device is determined by the surface the Tapelight is being attached to. In addition to the devices shown, construction adhesive compatible with PVC may be used.

### Option 1 - TP-01 Mounting Bracket

Place the mounting bracket over the lamp socket and screw to the desired surface. The quantity and positioning of brackets is determined by the specifics of each application. When turning corners, a bracket should be used at the start of each bend.

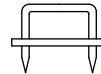
TP-01 Bracket



### Option 2 - TP-02 Mounting Staple

The quantity and positioning of staples is determined by the specifics of each application. When turning corners, a staple should be used at the start of each bend.

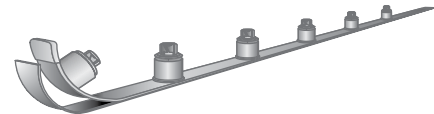
TP-02 Staple



Do not penetrate the Tapelight insulation.

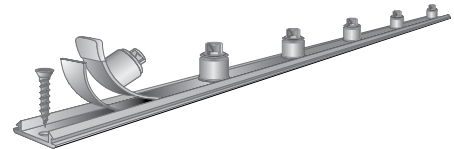
### Option 3 - Adhesive Tape Mounting

Adhesive tapes work best on smooth, clean surfaces. First attach the adhesive tape to the surface. Then remove the protective backing and press the Tapelight securely to the adhesive.



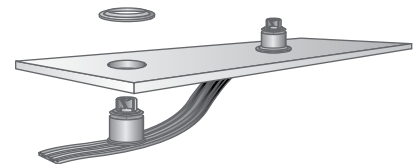
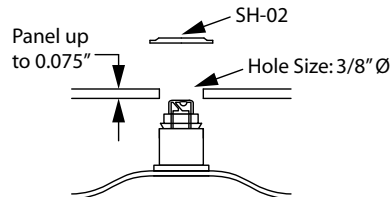
### Option 4 - RC-S Mounting Track

Attach the RC-S Mounting Track to the surface using screws or other secure means. Then attach Tapelight to base of channel with adhesive tape.



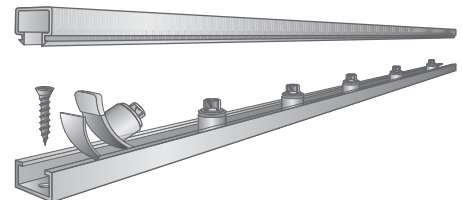
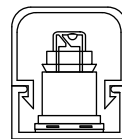
### Option 5 - SH-02 Panel Fastener

SH-02 metal fasteners securely lock Tapelight sockets in place for panel mounting. Push sockets through the hole in the panel from behind, then press the fastener in place from above.



### Option 6 - Decorative Channels

Attach the channel base to the surface using screws or other secure means. Then apply adhesive tape to the channel base. Remove protective backing and press Tapelight firmly to adhesive. The clear lens snaps onto the base.



## ⚠ PRECAUTIONS

Fixtures must be securely mounted in place. Never position the fixture where lamps make direct contact with any surface or object.

## LED Dimmer Instructions (Optional)

### LC Dimming System

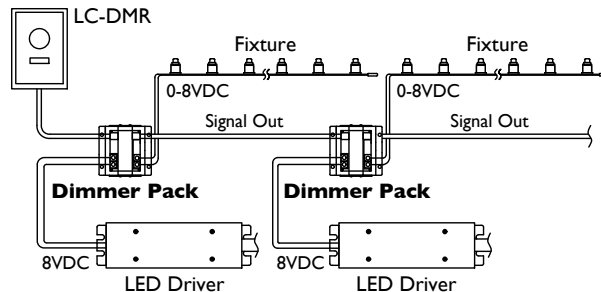
#### Wall Dimmer - Part #: LC-DMR

Power to the remote wall dimmer is provided from the LED Driver powering the first Dimmer Pack. A 50 foot CAT5 cable is provided.

#### Dimmer Pack - Part #: LC-1CH-DP

Each dimmer pack receives an 8 VDC output from an LDR8-40 LED Driver. The LDR8-80 LED Driver has 2 each 8 VDC outputs, and a dimmer pack is required for each output. A CAT5 cable is provided with each unit. Up to 25 dimmer packs may be connected in series if the total length of all CAT5 cable does not exceed 165 feet from the wall dimmer to the last dimmer pack.

For further information, refer to the instruction manual provided with the LC-1CH-DP.



### LC-1CH-MULTI Dimming System

Tokistar's LC-1CH-MULTI Dimmer Pack is compatible with industry-standard dimmers working on DMX or 0/1-10 VDC protocol.

#### Dimmer Pack - Part #: LC-1CH-MULTI

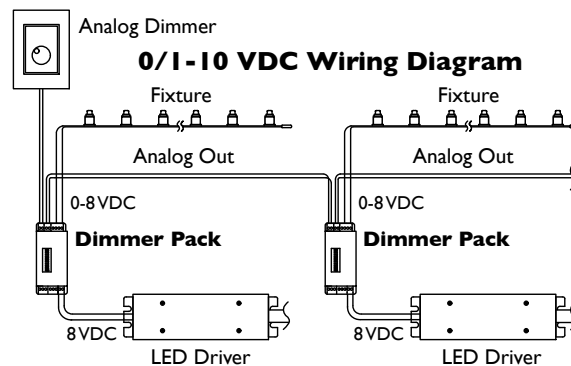
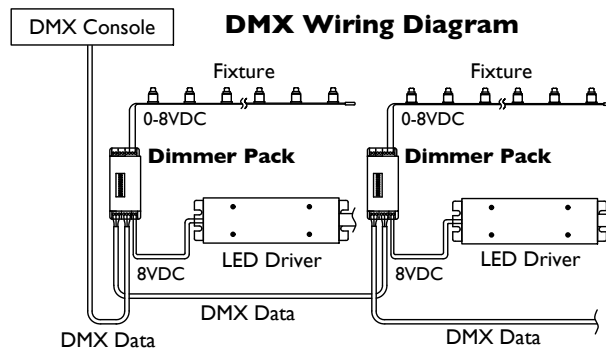
Each dimmer pack receives an 8 VDC output from an LDR8-40 LED Driver. The LDR8-80 LED Driver has 2 each 8 VDC outputs, and a dimmer pack is required for each output.

**DMX Mode** - Each unit is independently addressable. Up to 36 dimmer packs may be connected in series. For applications exceeding 36 dimmer packs, an additional feed from the DMX dimmer is required. The additional feed(s) can be sent directly from the dimmer, or you may use DMX Splitters. Consult factory on details of DMX Splitters.

**Analog Modes** - For operation from devices using 0/1-10VDC protocol, up to 10 dimmer packs may be connected in series. For applications exceeding 10 dimmer packs, an additional feed from the analog dimming device is required.

**Manual Mode** - You may select a light intensity the fixtures will operate at. In this case, no external dimming device is required.

For further information, refer to the instruction manual provided with the LC-1CH-MULTI.



## **⚠ PRECAUTION**

All dimming components are rated for dry location only. They must be installed within an enclosure suitable for the environment.

## TOKISTAR® LIGHTING

1015 E. Discovery Lane  
Anaheim, CA 92801

TEL: 714 772 7005 FAX: 714 772 7014

email: info@tokistar.com Website: www.tokistar.com