

5375 EVICA EP40+ RGBW

evica™

TECHNICAL DETAILS

- Evica EP40+ RGBW 45W Convection Cooled Effects Projection System
- Light Source: Fidelity RGBW
- Supply Current: 1200mA
- Forward Voltage: 20V x 4 Channels
- Housing: Anodised Aluminium
- Finish: Anodised
- Weight: 1.8Kg
- Control: DMX, DALI or Casambi
- Driver: Encased in IP66 box for exterior use and without for interior use.
- Gobo: 37.5mm (28mm Active area)
- LED Lifetime (L70): >43,000 hrs Ta 25°C



EXAMPLE SPECIFICATION

537512-RGBW-W-12A

EP40+ Convection Cooled 45W RGBW Gobo Projector,
Exterior IP65 + Stirrup Mount & hood, RGBW LED 1200mA (Max),
Wide Beam Angle (28.6°), Surface Mount, Black Anodised Finish.

PRODUCT CODE EXAMPLE: 5375 1 2 - RGBW - W - 1 2A

STYLE	Gobo	
Code	1	
IP RATING + MOUNT OPTION	Interior IP40 + Stirrup Mount	Exterior IP65 + Stirrup Mount & Hood
Code	1	2

LED COLOUR	LED Luminous Flux (Lm) Max per Channel			
	WHITE	RED	GREEN	BLUE
EP40+ Source Lumens	1550lm	500lm	1200lm	280lm
Code	RGBW			

BEAM ANGLE	Narrow Angle Lens	Medium Angle Lens	Wide Angle Lens
GOBO Beam Angle	17.6°	24.2°	28.6°
Code	N	M	W

MOUNT VARIANT	No Mount	Surface Mount
Code	0	1

NB. For other mount options specify type 0 and list mount separately

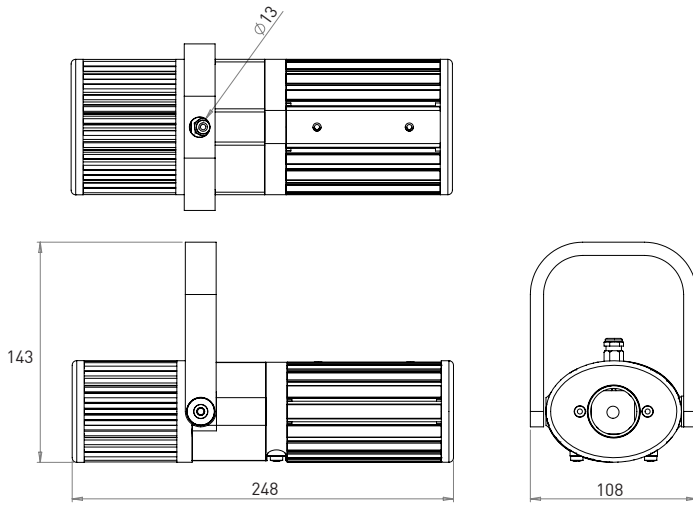
HOUSING FINISH	Black Anodised RAL 9005*	Custom RAL Powder Coated	Black Hard Anodised**	Anthracite Anodised RAL 7038*	Silver Anodised RAL 9006*
Code	2A	3	5	5E	9

* Anodised finishes indicate approximate RAL colour match.

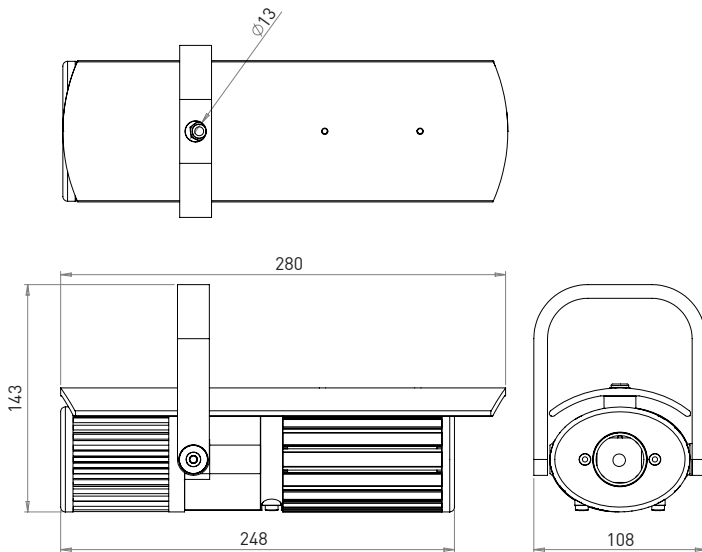
** Hard anodised finish is recommend for harsh environments.

5375 EVICA EP40+ RGBW

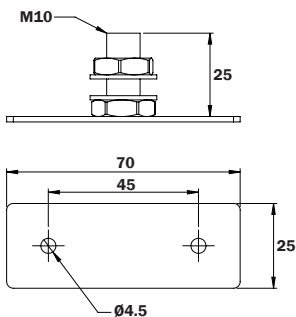
INTERIOR PROJECTOR DIMENSIONS WITH STIRRUP



EXTERIOR PROJECTOR DIMENSIONS WITH STIRRUP AND HOOD



SURFACE MOUNT ASSEMBLY FOR STIRRUP MOUNT OPTION



5375 EVICA EP40+ RGBW

DRIVERS

GEAR OPTION	CODE	
	INTERIOR	EXTERIOR
50W 1200mA DMX Dim	537519-341	537519-342
100W 1200mA DALI Dim	537519-331	537519-332

CASAMBI CONTROL DEVICE

DIMMING PROTOCOL	CODE
DMX*	537519-801

*Use with DMX Driver

Casambi device can be housed in junction box with driver for exterior use.

ACCESSORIES

General Accessories and Spares	CODE
Replacement Narrow Lens	537219-10
Replacement Medium Lens	537219-11
Replacement Wide Angle Lens	537219-12
Gobo Cassette	537219-01-X
Compression Ring for Gobo Cassette	537219-02
Torx Wrench	537219-59
Safety Bond	537219-58
Focus Tool	537219-57
Mount Accessories	Code
M10 Surface	537219-52-2
M10 Tree Strap	537219-53-2

X - select colour as per the specification table on page 2.

M10 TREE STRAP

